



Link-22

RSU 22 • Hampden • Newburgh • Winterport • Frankfort 24 Main Road North, Hampden, ME 04444 August 2016



Super Stock world champion Mallory Bruen (center) with her parents, Larry and Trisha Bruen, at the Soap Box Derby finishing line at Derby Downs in Akron, OH.

Reeds Brook 6th grader is world champ in Soap Box Derby Super Stock division

Mallory Bruen, daughter of Laurance and Trisha Bruen of Hampden, has returned from the 2016 Soap Box Derby in Akron, OH, as a world champion. Mallory, who will be a 6th grader at

Reeds Brook Middle School this fall, won five consecutive heats in her Super Stock racer at Derby Downs in Akron on July 16 to become the world champion in the
(Please turn to page 6)

RSU 22 Board eyes state funding options for traffic, safety, program upgrades at McGraw-Weatherbee campus

The RSU 22 Board of Directors has approved two potential timelines for improvements to McGraw and Weatherbee Elementary Schools that would allow the district to apply for state renovation and capital construction funds and minimize the need for local tax dollars.

The first alternative is to apply for state Revolving Renovation Funds for projects that would be limited to traffic and safety improvements, ADA upgrades, and minor renovations.

The deadline for Revolving Renovation Fund applications is September 30, 2016, with approval expected in the spring of 2017. A decision to go forward with the projects would result in a local referendum in November 2017.

The projects would include:

- New driveways and parking areas that would totally separate bus and parent traffic—a major safety objective.

(Please turn to page 2)

Emil Genest to retire Nov. 1, 2017

Emil Genest, Assistant Superintendent for Business in RSU 22 for the past 23½ years, has announced his retirement, effective November 1, 2017. Mr. Genest came to RSU 22 in April 1993, after working seven years as business manager and two years as Assistant Superintendent at RSU 67 in Lincoln. Before that, he spent three years on active duty serving as a captain in the U.S. Army.

Mr. Genest received his B.A. in Political Science from the University of Maine in 1978, his M.A. in Communications from UMaine in 1983, and his Certificate of Advanced Studies in Education Administration from UMaine in 1991.

In 2016, he was named Assistant Superintendent of the Year by the Maine School Superintendents Association (MSSA) for his expertise in finance and school construction and his tireless work on behalf of public education and RSU 22. In 2006, he also received the MSSA Educational Leadership award.

Mr. Genest is responsible for the district's finances to support

(Please turn to page 3)



Emil Genest



Girl Scout Troop 999, led by Celeste Hanish, raised funds for a new United States flag, which the girls donated to George B. Weatherbee School. Above, the Girl Scouts, who will be 5th graders at Weatherbee this fall, presented the flag at the school's June Assembly.

'Chitty Chitty, Bang Bang' flies into Hampden Academy Performing Arts Center

By Justin Hatch, Junior, Hampden Academy

While most students left school on the last day in June without any plans to return until August, members of the Hampden Area Theatre Troupe (HATT) turned right back around to spend the early part of their summer vacation on the stage of the Hampden Academy Performing Arts Center.



Justin Hatch

HATT was officially founded in 2015, though many of the cast and crew members have been involved with summer theatre in the Hampden area since 2013. *Chitty Chitty, Bang Bang* was their first full-scale musical. HATT serves the greater Hampden/Bangor area, incorporating students enrolled in RSU 22 into their casts and crew. This production in particular featured younger students from the district, along with their high-school counterparts.

Chitty Chitty, Bang Bang tells the story of two children who fall in love with an old race car, and convince their father, the

(Please turn to page 4)



Chitty flies! Caractacus Potts (Alex Ross) is at the wheel, with passengers Jeremy (Nathan Manker), Jemima (Chloe Lawrence), and Truly Scrumptious (Josie Lawrence).

RSU 22 Board eyes state funding options for McGraw-Weatherbee upgrades

(Continued from page 1)

- New ADA-compliant entrances with secure vestibules for students who are bused to school.
- Safer, more convenient parent drop-off areas.
- Minor building renovations to improve safety and security.

The estimated cost of the projects would be \$4.6 million, of which up to \$2 million would be funded through the Revolving Renovation Fund. (The RRF maximum is \$1 million per building, with 68% coming as a grant and 32% as a 10-year loan at zero percent interest. If the district receives the maximum RRF amount for both projects, the remaining \$2.6 million would be funded locally.

The second alternative is to apply for state-funded Major Capital Construction projects for the two schools, which would push the local referendum back to November 2018.

The Department of Education is currently preparing for a new round of school construction applications—the first since 2010—and if RSU 22 submits applications for McGraw and Weatherbee, the district should know by June 2017 whether the projects are high enough on the list to be funded. If they rank high enough, the district will fold the Revolving Renovation projects into the Capital Construction projects, which will include building, program, and edu-

cational needs, as well as traffic and safety improvements.

Assistant superintendent Emil Genest said it was too early to say what a capital project request would cover, but he noted that McGraw

and Weatherbee have three portable classrooms between them, and that McGraw doesn't have an art room or music room and is using the stage for guidance and special education.

He said that including everything in a capital project application would delay the implementation of the traffic and safety improvements but would probably save the district a lot of money.

"We don't know what the rules for the new major capital project applications will be, but in the last round [which included Hampden Academy], all elements of a project that do not exceed state standards received 100% funding," he said.

Mr. Genest said the Board's Building Committee had tasked him and the architect, WBRC Architects and Engineers of Bangor, to exercise due diligence and make sure the district applies for any state or federal funding that is available.

"The committee feels that the

projects are important, but it also wants to keep local costs to a minimum," he said.

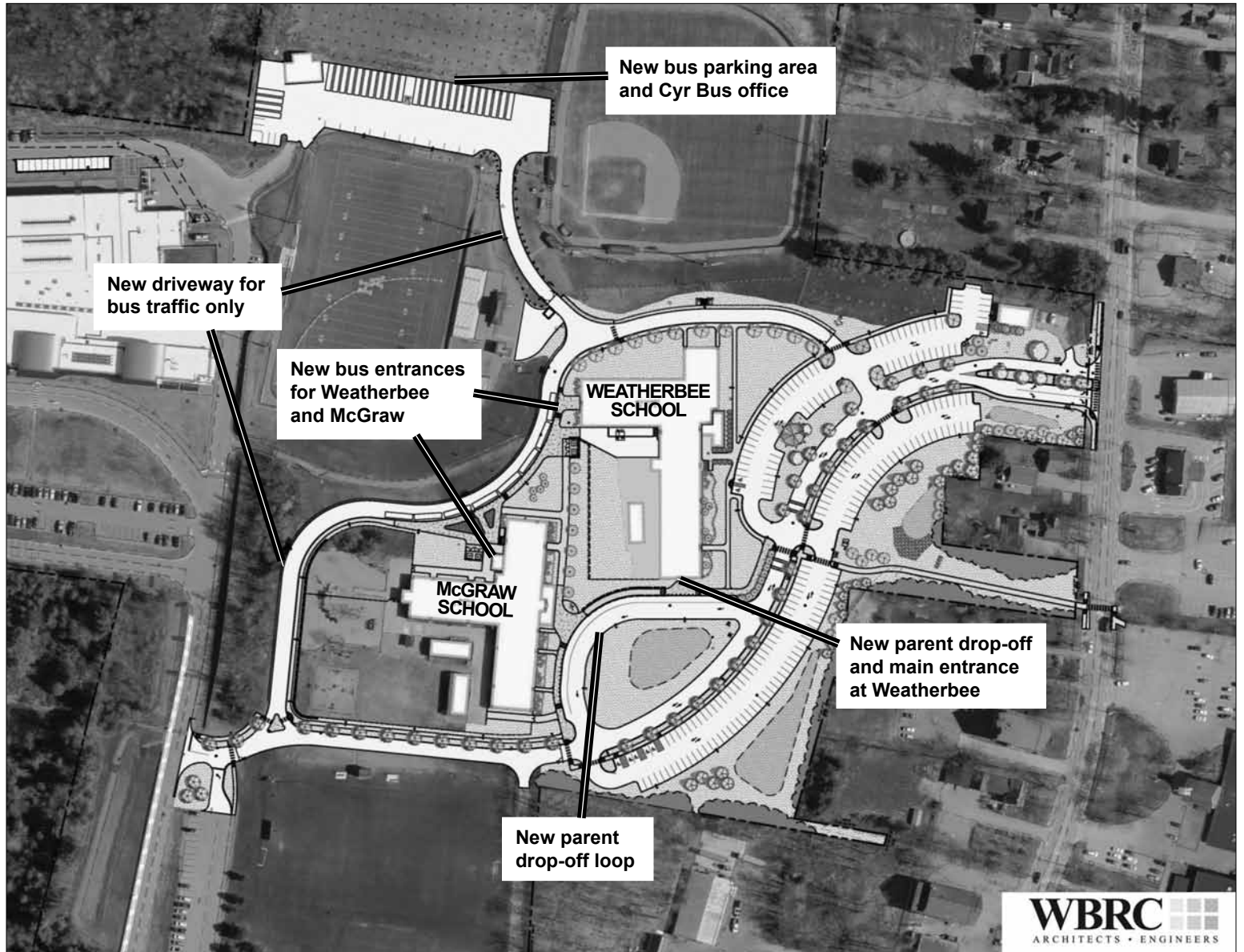
* * *

The Building Committee has been discussing possible improvements to the McGraw-Weatherbee campus since late summer of 2015, when WBRC was hired to do preliminary concept planning for the project.

The committee recognized that the most immediate issue was traffic—in particular, the conflicts between parent and bus traffic and the bottlenecks that occur when parents drop off their children in the morning and pick them up in the afternoon.

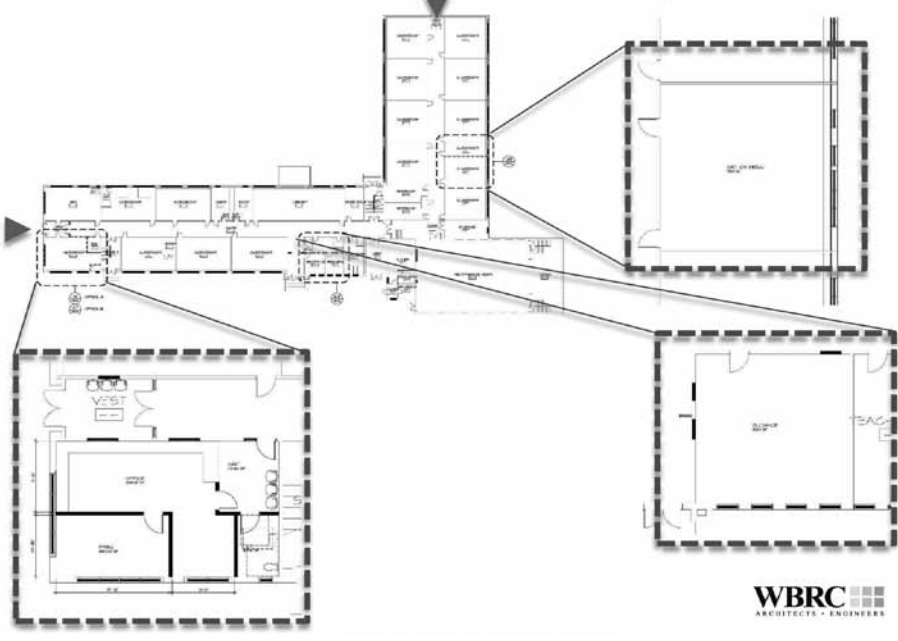
Several different options were discussed, but the committee settled on a plan to separate bus and parent traffic by developing a new driveway on the front side of Weatherbee and McGraw Schools with a parent drop-off loop for both schools and about 250 parking spaces for faculty,

(Continued in next column)



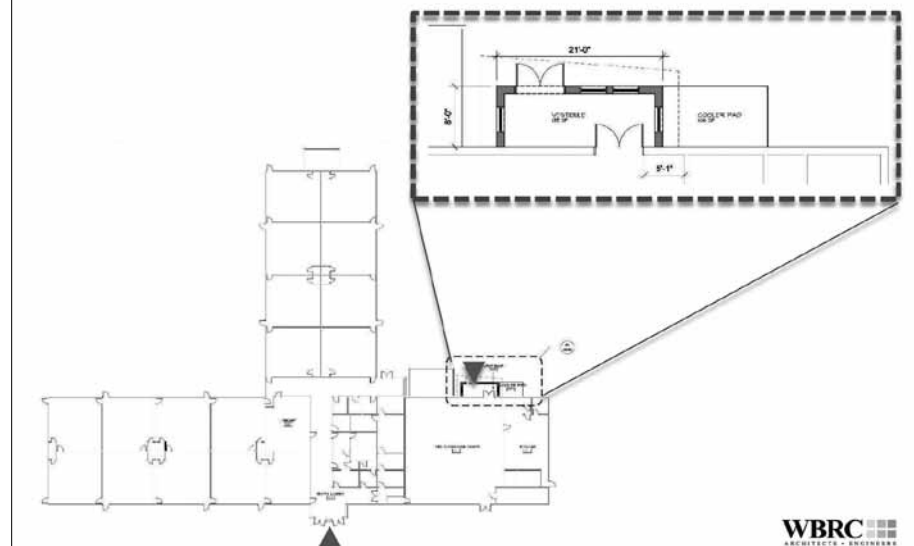
The McGraw-Weatherbee traffic/safety plan includes separating bus and parent traffic by creating a dedicated parent drop-off loop and a new driveway for buses, along with new bus entrances for both schools and a new main entrance and parent drop-off area on the south end of Weatherbee School.

Weatherbee School Concept Plan



The concept plan for Weatherbee School includes a new entrance on the south end of the building (far left), relocating the principal's office adjacent to the new entrance, relocating the guidance office to the current principal's office location, relocating either the art or the music room to the current guidance office location, and eliminating the partition in the guidance/special ed area to create a new classroom.

McGraw School Concept Plan



The concept plan for McGraw includes a secure, ADA-compliant vestibule at the new bus entrance, along with a concrete platform to provide space for a cooler or freezer.



Link-22

RSU 22 • Hampden • Newburgh • Winterport • Frankfort 24 Main Road North, Hampden, ME 04444

is published by Maine Regional School Unit No. 22 for the citizens of Hampden, Newburgh, Winterport, and Frankfort.

Richard A. Lyons, Superintendent of Schools

David C. Wollstadt, Editor (www.SchoolNewsletters.net)

Maine Regional School Unit No. 22
24 Main Road North, Hampden, ME 04444

207-862-3255

www.rsu22.us

Curriculum Office Update

By Mary Giard, Director of Curriculum, Instruction, and Assessment, RSU 22

Title IA Information for the RSU 22 Community

No Child Left Behind Report Cards

The No Child Left Report Cards are now available for review at the RSU 22 website under the Resources Tab. The curriculum pages, proficiency-based education pages, and Title IA pages are all listed under that tab.

Titles IA and IIA Applications

The Title IA and Title IIA federal applications have been submitted to the state department for review and acceptance. Both are on file at the superintendent's office.

Title IA allocations are provided based on a number of factors, including supporting students who may qualify for free or reduced price meals. Two schools in our district qualify for the extra assistance, Leroy Smith School and Samuel Wagner School.

Title IA projects for the 2016-2017 school year include: additional literacy support for students needing the assistance during the school day, after school tutoring for Title IA eligible students from both Leroy Smith and Wagner schools in Winterport, and funding for a Title IA summer school project in 2017.

Title IIA allocations are provided for educator professional development. RSU 22's projects include: New Teacher Support, Proficiency Based Education, Educator Effectiveness, Literacy, Science and Technology, Curriculum work and professional development.

The Title I application will be worked on through the summer. A copy will be available for review in the RSU 22 superintendent's office.



Mary Giard

Proficiency-Based Education Update for RSU 22

RSU 22 continues to move forward with our proficiency-based education implementation plan and diploma requirements. RSU 22

will award proficiency-based diplomas starting in 2020.

A proficiency-based handbook will be

added to the RSU 22 website in the fall of 2017. It will include updates from all grade spans: 9-12, 6-8 and PK-5.

Emil Genest, Assistant Superintendent for Business, to retire Nov. 1, 2017

(Continued from page 1)

educational programs, facilities and transportation.

A few of the highlights of his tenure at RSU 22 include facilitating state funding, oversight, design and construction of the Reeds Brook Middle School; the building renovation project at the Smith Elementary School, and the new Hampden Academy. Because of his tireless advocacy and efforts, the entrance road to Hampden Academy was named "Emil P. Genest Way."

Mr. Genest was instrumental in incorporating the Town of Frankfort into the RSU 22 educational community.

He was responsible for establishing the RSU 22 Education Foundation, which fosters innovation and excellence in the district's schools by raising funds and generating community-wide support. He also helped establish the district's pre-kindergarten program.

Mr. Genest's most recent project has been to develop plans to upgrade the McGraw-Weatherbee facilities and campus (See story on page 1).

Mr. Genest serves as Executive Committee Chair of Penobscot River Educational Partnership, President of the Advisory Council for Eastern Maine Community College, a Corporator of the Galen Cole Family Foundation and Board #111 varsity basketball official. He enjoys golf,

physical fitness, fishing and travel.

Emil and his wife Becky reside in Brewer. He has a stepson, stepdaughter and grandchild. Emil says he doesn't have any specific plans for his retirement at this point and says, "I am looking forward to my next chapter and the opportunities available."

When Mr. Genest accepted the Assistant Superintendent of the Year award, he said what motivates him in his job are students and the community.

"I grew up in a French Canadian family in Lewiston, Maine and my parents instilled in me the value of education," he said. "An education is lifelong—it is forever—and I truly believe that from the deepness of my heart. I passionately care for the betterment of students and the community as a whole. As I look around RSU 22, I am proud to have been a part of the work that has been accomplished by this school district and communities."



Learning about water movement.

Hampden Academy Child Development Class Nursery School

The Hampden Academy Child Development classes will be conducting their annual nursery school, starting in October.

Applications are now available for 3-5 year olds, Pre-K.

For more information, please email Terry Deane at tdeane@rsu22.us, or call the high school, 862-3791.

RSU 22 Board eyes state funding options for McGraw-Weatherbee upgrades

(Continued from preceding page) parents, and visitors (an increase of about 110 spaces).

In addition, a new driveway for bus traffic only would be constructed in back of the two schools with new bus entrances for students at both schools. Buses would enter the McGraw-Weatherbee campus from the Reeds Brook Middle School side of the campus and would exit to the relocated bus parking area adjacent to the practice football field. The bus office will also be relocated to that area.

Mike Johanning of WBRC said the idea of separating bus and parent traffic by constructing a driveway in back of the two schools was suggested by a town councilor during one of several Building Committee meetings where the project was discussed.

Because the new parent drop-off at Weatherbee is at the south end of the school, a new ADA-compliant entrance with a secure vestibule would be constructed there and the principal's offices would be relocated.

Other renovations at Weatherbee would include moving the guidance

office to the existing principal's office, and removing a partition that currently separate the guidance office from a special education classroom to create a full-size classroom.

At McGraw, the new bus entrance would be on the back (west) side of the gym. In addition, a concrete platform would be constructed adjacent to the entrance to provide space for a cooler or freezer, which the school currently doesn't have.

* * *

Mr. Genest said the improvements to the McGraw-Weatherbee complex would be the final phase of a master plan that's been going on for the last 20-25 years, which has included:

- Construction of Wagner Middle School in Winterport.
- Construction of Reeds Brook Middle School in Hampden.
- Major renovations and expansion at Smith Elementary School in Winterport.
- Construction of the new Hampden Academy.

"This is the last one that we're projected to deal with for the next 25 years," Mr. Genest said.



Proposed renovations would include canopies along the drop-off loop, similar to this drawing of a canopy for the new Brewer Community School.

In addition to traffic and safety, he said the primary issues that need to be addressed are the growing enrollment at McGraw and Weatherbee.

Among the deficiencies to be addressed in any renovation plan would be eliminating portable classrooms at both schools; separating the gym and the cafeteria at both McGraw and Weatherbee; providing space for guidance at McGraw (guidance offices are currently located on the stage); additional space for "specials," such as art and music, as well as possible expansion of the world language program; and construction

of an elevator at Weatherbee (the school currently has a lift, which has been grandfathered).

Mr. Genest said that planning for a major capital project might consider the possibility of connecting the two buildings so they could be operated as a single, PK-5 school. However, he said the committee would need better enrollment data and structural information before it could proceed further in that area.

If the two schools were joined together, the new construction could include shared library, cafeteria, and gym facilities, as well as space for community use.

'Chitty Chitty, Bang Bang' flies into Hampden Academy Performing Arts Center

(Continued from page 1)
eccentric inventor Caractacus Potts, to purchase the the car and fix it up. They soon discover that the car possesses some magical abilities, like the ability to fly. Unbeknownst to the Potts family, the Vulgarian Baron Bomburst has sent his spies, Boris and Goran, to England to capture the race car and bring back the inventor. However, the spies are not the brightest, and they accidentally capture Grandpa instead of Caractacus. The Potts family, with the help of Truly Scrumptious and Chitty, must rescue Grandpa from

the clutches of the Baron.

All cast and crew members assisted in the set-building, prop-making and costuming processes with special assistance from recent Hampden Academy graduate Lydia Tilley in the light booth. HATT relies on support from the community, and with this year's show being a large undertaking, they held a t-shirt fundraiser, where sponsors could feature their name or logo on the back of the brand-new company shirts.

The rehearsal schedule was very fast-paced. With only a handful of rehearsals towards the end of the school



HAMPDEN ACADEMY
Leigh Magnan, Principal
862-3791

year, the actors were left with only 17 summer rehearsals before opening night. *Chitty Chitty, Bang Bang* was performed three times in the Hampden Academy Performing Arts Center, with all performances being well-received and well-attended.

HATT is led by HA faculty member Rob Kissinger, with aid from a hard-working team of parent volunteers. Together, they make up the HATT Board of Directors.

The cast featured Alex Ross as Caractacus Potts, Josie Lawrence as Truly Scrumptious, Chloe Lawrence as Jemima Potts, Nathan Manaker as Jeremy Potts, Jack Burrige as Baron Bomburst, Terra Mal-

know as The Baroness, Miles Martin as Boris, Justin Hatch as Goran, Aidan Babbitt as Grandpa, Bekah Novak as The Toymaker, and Sydnie Phillips as The Childcatcher.

Paige Malkow, Emily Gonthier, Jaden Clewley, Reba Sands, Nate Bailey, Hunter Spencer, Harmony Stetson, and Mikayla Patel made up the ensemble of Morris Men, inventors, cooks, and other various characters. Sophie Crooker, Amy Spencer, Dylan Lawrence, and Max Ross, HATT's youngest members, portrayed the children.

The show was directed by Rob Kissinger, with musical direction and choreography by Mikayla Burrige, and musical accompaniment by Clayton Smith.



Caractacus Potts (Alex Ross) and the Morris Men perform "Me Ol' Bamboo."



Bike winners—From left: JoHannah Philbrook, Megan Deans, Matthew Southard, and Amy Spencer.

Wagner Pride Pack Read-a-Thon raises \$725; 4 win bicycles

The Wagner Middle School PTA, Wagner Pride Pack, hosted a Read-a-Thon last spring from May 2 to May 22.

The Read-a-Thon concluded with a school-wide assembly on June 9 at which Pride Pack members Jennifer Dudley and Anita Deans announced the winners.

Prizes of gift cards donated by local businesses were awarded to each grade level for the most pages read and the most pledge money raised.

The school totals were very impressive, with the students reading 51,913 pages and raising \$725.

Winners for each grade level were:

- 5th grade: Most Pages Read, Rachel Palmer; Most Money Raised, Megan Sweeney.
- 6th grade: Most Pages Read, Carly Philbrook; Most Money Raised, Annika Bragg.
- 7th grade: Most Pages Read, Andrea Moody; Most Money Raised, Alexis LePage.
- 8th grade: Most Pages Read and Most Money Raised, Matthew Southard.

Every student who participated in the Read-a-Thon was entered into a drawing for a chance to win a bike, with one winner being drawn for each grade level. The winners of the bikes were:

- 5th grade: Amy Spencer.
- 6th Grade: JoHannah Philbrook.
- 7th Grade: Megan Deans.
- 8th Grade: Matthew Southard.

Wagner Pride Pack would like to thank the teachers and staff at Wagner Middle School as well as the Wagner Student Council and local businesses that supported the Read-a-Thon.

Principal's Message: Welcome to 2016-17

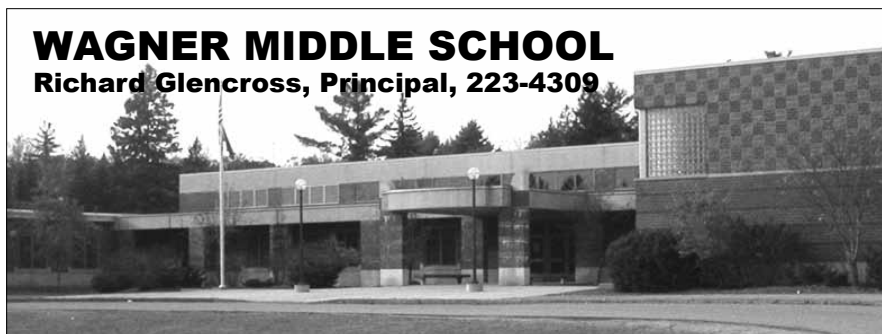
Dear Wagner Students and Families,

I hope you are having a wonderful summer. The Wagner Staff and I look forward to welcoming students back to school and a special welcome goes out to students who will be attending Wagner for the very first time. This year we have several new staff members who will be joining us at Wagner. They include: Mr. Hall (5th Grade), Ms. Deprey (Physical Education/Health), Ms. Penley (5th Grade Educational Technician) and Mrs. Lowell (Guidance Counselor). Our record of educational excellence and our tradition of respect and pride in one's self will continue to guide us in the coming school year.

I would like to take this opportunity and extend an invitation to students to participate in a team sport. In order to try out and participate in team sports at Wagner, students must complete an RSU22 interscholastic sports physical annually. Forms can be found on our school website (wagner.rsu22.us).

WAGNER MIDDLE SCHOOL

Richard Glencross, Principal, 223-4309



Fifth graders are welcome to participate in cross-country, chess, and track and field as well as other extra curricular activities such as the school play, library helpers, or art club.

Below are some important dates to help you organize your back to school calendar:

August 29: 5th Grade Open House, 5:30 to 6:30 p.m.

August 30: First Day of School.

September 5: Labor Day Holiday (no school).

We are fortunate to live in Maine in the summer. Please enjoy what time is left. In the meantime, if you have questions or concerns about the upcoming school year, do not hesitate to contact me.

—Richard Glencross, Principal

Wagner Pride Pack

Wagner Pride Pack is the parent volunteer organization at Wagner Middle School. Over the last several years Wagner Pride Pack has worked to help support the students, teachers, and staff at Wagner Middle School in many different ways.

Pride Pack helps to financially support field trips and school assemblies/programs and has created a teacher "wish list" to help teachers purchase supplies for activities and special events at the school, as well as helping to support school athletics and the music program.

Pride Pack raises money year 'round in many different ways: concessions sales at the school play, dances, and at Wagner-hosted track meet at Hampden Academy, as well as sponsoring the Read-a-Thon and the sale of Wagner Pride merchandise.

Pride Pack also has been working to establish special traditions for the students at Wagner Middle School, including favorite events like Fall Thriller and the Valentine's Celebration,



WAGNER PRIDE PACK—Front row (l. to r.): Annika Bragg, Amy Spencer, Megan Sweeney, and Rachel Palmer. Second row (standing): Pride Pack President, Jennifer Dudley; Alexis LePage, Andrea Moody, Carly Philbrook, Matthew Southard, JoHannah Philbrook, Megan Deans, and Pride Pack Vice President Anita Deans.

which the students look forward to. Pride Pack is always looking for new events as well and tries to do something fun and different each year.

For further information on Pride Pack, please check out their "Wagner Pride Pack" page on Facebook.

Principal's Message: Weatherbee School Welcomes You!

I am happy to share that Weatherbee School will have little to no change for the upcoming school year! We have made some significant changes in the previous two years and are seeing the positive effects of those changes. Now it is time to maintain and refine.

Specifically, our schedule will remain intact with only minor internal modifications around special education and the reading room. Honoring and keeping this schedule means those students and teachers agreed with and saw the value in not teaching the same subject at the same time every day. For example, if you have an "early riser" then that child may learn best in the morning and be tired by the afternoon. If you have a child who struggles to make our 8:50 start time, then their optimal learning may be after lunch when he/she is really alert. In a traditional schedule, you teach the same subject at the same time daily. As a result, students may miss out on some optimal learning time for a subject area based on a child's internal clock. Last year, our core subjects were taught at different times of the day. Teachers have seen great benefits, especially for that last period of the day. That practice will remain.

The six day "encore" or "special" rotation was a hit last year and continues into the 2016-17 school year. With this model, we follow an A-F schedule for art, music, PE, guidance, library, and Spanish. If we have a snow day, in-service day,

or holiday, we simply go to the next letter day when we return to school. In this way students who formerly would have missed a class due to a Monday holiday, for example, do not go without that special. Our website will always have the letter day posted prominently and it is in the window at each school entrance as a reminder. Students love not having to go without their favorite special just because we have a snow day!

We retained the team-teaching model as data from achievement tests and internal progress monitoring tools indicated that it is serving students well. Student feedback also endorsed the teaming model. A cohort of grade 5 students was interviewed last year by an outside interviewer. This group of students was unique in that they had learned at Weatherbee School with a traditional home room teacher, on a two-person teaching team, and on a three-person team. The students were candid with their feedback, and we really appreciated their insights. What they reflected reaffirmed the changes we have made in the past few years and the overall positive outcomes for students academically, socially, and emotionally.

Weatherbee staff continues to document individual student progress on specific standards and group and regroup on an almost daily basis as a result of this close monitoring. The use of mini-lessons followed by small group or individualized instruction is our model for all core subjects and is used by



GEORGE B. WEATHERBEE SCHOOL
Christine Boone, Principal
862-3254

all teachers. We are getting more skilled every year when it comes to customizing student learning. Our team members in the special and gifted education departments team well with our regular education teachers to ensure that students have "just right" instruction in the regular education setting. Technology is used as needed to help practice previous skills, provide necessary accommodations and modifications, or extend and personalize learning. For example, beyond whole-class instruction with a teacher and the technology integrator, there are five iPads in every classroom so that students may access our technology-based learning opportunities in the small group setting. The iPads obviously don't replace primary instruction, but they do offer a level of support when differentiation is necessary.

During the 2016-17 school year, we will remain focused on "Teaching to the Edges," because at Weatherbee School we sincerely believe that no child is "average." Every child has peaks and valleys

in their learning, and it is our job to help students discover, celebrate, and grow those peaks while supporting around and filling in those valleys. We count on our communities to support us in this mission, and you always deliver! We approach this new school year with confidence and excitement around the improvements we have made and the new goals that we will set once the school year starts.

Thank you for supporting the George B. Weatherbee School in all of our initiatives, past and present. We do not take your community partnership for granted. We use our Facebook page and website to keep community members aware of our progress and special events throughout the year, so please "follow" us on Facebook and watch the website for new news!

Welcome to what is shaping up to be a great year for students at Weatherbee School!

Sincerely,
Christine Boone, M.Ed., Principal
George B. Weatherbee School

Weatherbee hosts 'Coffee, Tea, Read with Me!'

Staff members Kelly O'Brien, Matthew Madore, Kathleen Johnston, and Christine Boone worked with parent volunteers Christine Verhar and Susan Witt to offer another fantastic "Coffee, Tea, Read with Me!" at Weatherbee School last spring.

Mrs. Verhar offered her expertise and brought a level of organization and polish to the new format piloted the previous year.

This new format showcased every third grader as they sang patriotic songs under the direction of music teacher Matthew Madore. Many seniors commented how touched they were by the chorus of young voices singing the patriotic songs of their youth.



Will Kelley reading to his grandfather.



Jonathan Bouchard hugs his grandmother, Deanna Hessert.



Montana Langille reads to the seniors.

Fourth graders worked for days on their research around our nation's capital or the Civil War and they read their published works to some very impressed seniors. One senior made it a point to share with the principal that he was "quite impressed with the idea that kids came to the tables to share all the information that they had researched and then written up themselves." He added that the student "did an outstanding job."

Grade five students read origi-

nal poems and received rounds of applause. The voice and creativity in their poems was noted by all who attended. The emcees for the event were Caleb McAvoxy, Grace Pelletier, and Ethan Morin.

Coached by Ms. O'Brien, the 5th graders who shared poetry and served as masters of ceremony did an amazing job.

The event was a huge success, thanks to the many hands that volunteers gave under the guidance of school counselor Kelly O'Brien. A wonderful army of parent volunteers helped organize and serve, solicit donations of food, or coach students

in serving. Specials teachers at Weatherbee did the same. They acted as runners or directed senior parking or student ushers. The Weatherbee food service department prepared fresh fruit, and the PTO purchased a coffee maker for the event!

Art teacher Mrs. Perrow made all the lovely centerpieces.

It was a true community effort, but the shining stars were Weatherbee students. Students did all the decorating, clean-up, and serving.



GIRLS ON THE RUN—On Sunday, June 5th, 15 Weatherbee girls participated in the Girls on the Run 5K held in Cumberland, ME. This race was the culminating event of 10 weeks of training! Over 600 girls participated, representing 31 schools throughout Maine. In all, with parent and family support, over 2,000 runners participated! Girls on the Run is a guidance-based program that teaches girls the power of positivity, how to develop inner strength, how to stand up for themselves and others, and how to deal with difficult social situations. All the girls worked so hard and we had a fantastic time!



BOOKS FOR BIKES—Six Weatherbee students—a boy and girl from grades 3, 4, and 5—received bicycles through the Masonic Mystic Lodge #65's Books for Bikes school-wide reading incentive program. The bikes were delivered by Ed Gardella and Aaron Mower of Lodge #65.

Reeds Brook to kick off 2016-17 with 'Best First Day Ever'

Students attending Reeds Brook Middle School this fall can look forward to the Best First Day Ever when they start the new school year on Tuesday, August 30.

The idea is to kick off the school year with a first day filled with fun activities that emphasize student citizenship and Reeds Brook's core values of honesty, responsibility, compassion and respect.

The program is being organized by a group of teachers led by David Haggan, who teaches 8th grade social studies, and Kim Haggan, Dean of Students and 6th grade English and social studies teacher.

Mr. Haggan says the goal is to start off the new school year with a bang—welcoming the student body, promoting school pride and excitement for the coming academic year, and presenting the school's core values in a positive and exciting way.

As they enter the school, the students will be given sunglasses and



Inspirational speakers Noel March (left) and Mike DeVito.

welcomed with the theme, "You Can't Hide Rebel Pride. Your future is so bright you've got to wear shades!"

The program will start with a presentation by Noel March, United States Marshal for the District of Maine who is also a singer, musician, and storyteller, and Mike DeVito, former defensive end for the University of Maine Black Bears who played in the NFL for nine years—six years with the New York Jets and three years with the Kansas City Chiefs. Mr. March, who lives in Hampden, was one of the motivational speakers at last fall's Best First Day Ever.



Mr. DeVito announced his retirement from professional football last spring and will become part of the TV and radio broadcast team for UMaine football games this fall.

Following the March-DeVito presentation, the students will be divided into small groups for a series of workshops on the core values led by teams of two teachers each. Following the workshops, the students will go through the lunch line and take their lunch outside, where they'll have an opportunity to hang out, visit, and play.

After a half-hour of outdoor

games, the students will go to the gym for a motivational video presented by Mr. Haggan and a special broadcast by two superheroes, Integrity Man (technology integrator Chris Beckwith) and Vicky Values (8th grade teacher Karyn Field).

Closing out the day will be a performance by Becky and the Buckets (music teacher Becky Mallory beating on a collection of 5-gallon drums), and a review of the day's events by Principal Regan Nickels, who will also look ahead to the exciting new school year.

Reeds Brook 6th grader is world champ in Soap Box Derby Super Stock division

(Continued from page 1)

Soap Pox Derby Super Stock division.

With her victory, Mallory won a trophy that's almost as tall as she is, along with a \$3,000 scholarship.

Mallory earned the right to compete in Akron by winning the Northern Maine Soap Box Derby race in Houlton on June 18. In Akron, she competed against 95 winners of other local races from throughout the U.S. and several European countries.

This was Mallory's second trip to Akron.

In 2014, she acquired enough points in rally races at Houlton to qualify for a trip to Akron in the Rally Stock division, but she was eliminated in her first trip down the hill. (Rally racing is similar to regular Soap Box Derby racing in that the racers are pulled down a hill by gravity. However, rally racers can compete wherever rally races are held, and they qualify by earning points based on how they finish. By contrast, racers like Mallory who compete in the local race program have to win the local race closest to where they live, which is held just once a year.)

The Bruen family has been



Mallory Bruen (lane 1, left) crosses the finish line half a car length ahead of runner-up Melody Castner of Ohio (lane 3, right) in the final race of the Soap Box Derby Super Stock division at Derby Downs in Akron, OH.

involved in Soap Box Derby racing for about eight years, starting with Mallory's older brother, Chris, who is now 15 and a sophomore at Hampden Academy.

"When Chris was 7, we were driving through Bangor and saw the Soap Box Derby race on Buck Street," recalls Mr. Bruen. "We stopped to watch, talked to some parents, and learned that kids had to be 8 to race. We got a car for Chris, and that next year, the race was on his birthday, and he finished 4th in his first race ever."

Unfortunately, that was the last year the Soap Box Derby was held in Bangor, so Chris skipped a year. Then, in 2010, the Bruens heard about the races in Houlton; Chris entered in the Local Stock division and won, earning the right to go to Akron.

At Derby Downs, Chris kept winning, placing first in his Local Stock division heats until the very end. He would up winning



At the start of the race, Mallory (red car, far lane) is already ahead of both of her competitors. Note that her head is tucked further down and that she has a lower profile than the other drivers.

5th place in the world championships and taking home a trophy that's not quite as tall as the one Mallory brought home last month.

Chris then moved up to the Super Stock division, and in 2013 he won again at Houlton, earning a second trip to Akron. Unfortunately, he was eliminated on his first heat.

Mr. Bruen says the family would like to stay involved in Soap Box Derby racing, but they're not sure how that will happen.

He says Mallory, as a Super Stock champion, can't continue to compete in that division. She would like to move up to the Masters division, which is open to older (age 10-20), more advanced racers, but, there aren't enough competitors to hold Masters races in Houlton, so she'd have to travel to New Hampshire to compete. She could also do rally racing in Super Stock, but that would also mean traveling to New Hampshire and beyond to find races.

Mr. Bruen says he expects Mal-

lory's younger brother, Stephen, 9, to continue the family Soap Box Derby tradition. Stephen, who will be a 4th grader at George B. Weatherbee School this fall, has been racing in the Stock division at Houlton for the past two years and placed 8th last June. "We'll see how he does next year," says Mr. Bruen.

When asked why she has been so successful in Soap Box Derby racing, neither Mallory nor her dad have a ready explanation.

"I have no idea at all," says Mallory. "It's mostly luck."

Mr. Bruen agrees that it's mostly luck, but adds that a successful racer has to drive straight and keep a low profile to minimize air resistance while coasting to the bottom of the hill.

"She has to keep her butt back and her head down," he says.

That appears to be something Mallory is very good at. A close look at photos of her races in Akron

(Continued in next column)



A Soap Box Derby official chats with Mallory as she gets set for the start of one of her heats at Derby Downs.

Welcome to Leroy H. Smith School; Open House set for Thursday, Aug. 25

By Dawn Moore, Principal
Leroy H. Smith School

What a fantastic summer Smith School has had! Our Title I Summer School program was a big hit! The students really enjoyed continued learning over the summer. Many students came to the summer book swap and swapped books each Monday and Thursday to keep up their reading fresh over the summer.

Our Smith School garden has grown tremendously (and is extremely delicious), thanks to all the help from Mrs. Layman, the Winterport/Frankfort community and Smith School students who kept it watered

and weeded. Our Summer Lunch program was hugely successful as well. Many families were able to enjoy a nutritious meal and then socialize on the playground. It was a busy and eventful summer all around!

I am very excited to see you all at Open House on Thursday, August 25. Grades 1-4 are welcome from 5:15-5:45; then Kindergarten will host Open House from 6-7, including a bus ride for all incoming K and Pre K!! (Winterport Pre K children are invited to join us at 6:30 for bus safety and a bus ride!)

This summer offered a lot of opportunity to get outside and have some



LEROY H. SMITH ELEMENTARY SCHOOL
Dawn Moore, Principal, 223-4282

fun. I hope everyone did so! Our school is ready to have all of you back and to welcome our new incoming friends. The Smith School staff has been working very diligently to make

sure classrooms are ready for you. Everyone at Smith School is looking forward to having a fabulous year! See you all on Tuesday, August 30 for the first day of the new school year!

Smith School students enjoy summer school

Using federal Title I grant monies, we were able to provide a summer school for 2016 for Title I identified students at the Leroy Smith School. The funds paid for teachers to instruct and support students as well as for transportation for students enrolled in the summer program. By providing the summer reading support, we hope to ensure that these students will avoid the summer learning slide and will be ready to start school in the fall and move to higher levels of achievement.

Students entering first grade worked on reading and writing high frequency words, phonics skills, reading a selection of leveled books, and journal writing. Students entering grades two through four worked on several literacy skills during summer school, including writing, reading fluency and comprehension, sight words, and spelling. Students in both groups had a guided reading group each day and also worked in the Lexia reading program on the iPads. Each week focused on these literacy skills in the context of a different theme. We have studied weather, oceans, insects, camping, and farming.

Students worked hard and enjoyed their time at summer school!

PreK available in Hampden, Newburgh, Winterport

RSU 22 continues to offer well rounded, curriculum based PreK's for all children turning 4 years old on or before October 15, 2016. We are proud to work as a partnership with Penquis Cap, Waldo Cap, Child Development Services and Highland Pre-School.

We offer a variety of settings in Hampden, Newburgh and Winterport to best meet the needs of students and families. Currently, the Winterport and Newburgh locations have openings still available for the 2016-17 school year.

The PreK program at the Leroy H. Smith School is a full-day program, four days a week, M-Th, 7:30-2:00. Openings are still available for Winterport and Frankfort residents! Please contact Waldo CAP @ 338-3827 for an application.

The PreK program at the Newburgh Center is a full-day program, Tuesday-Friday, 7:30-2:00. Openings are still available for Hampden and Newburgh residents. Please call Penquis CAP at 973-3567 for an application.



Painting and coloring are among the activities at PreK.

We are pleased to be able to offer PreK to our communities. Please contact Dawn Moore at dmoore@rsu22.us with any questions.

Reeds Brook 6th grader is Soap Box Derby world champion

(Continued from preceding page)

shows that her head is consistently tucked further down and her profile is lower than that of her competitors.

Mallory is the first racer from Northern Maine and the second person from Maine to win a first-place trophy at the Soap Box Derby. Her race car will be on permanent display at the Soap Box Derby facility in Akron.

One of the cars that Chris took to Akron is on display at Downeast Toyota, which donated the painting for both his car and Mallory's first-place award winner.

Mallory will be riding on a float in the Hampden Children's Day parade on August 20.

* * *

Mr. Bruen has enjoyed his family's participation in Soap Box Derby, and he'd really like to see it come to Hampden.

"I had a chat with some town councilors recently, and that might be a possibility," he said. "They're talking about the possibility of developing the area behind the fire stations into fields and having a sled hill. If we had a sled hill, we might be able to take it a step further and create a Soap Box Derby hill."

He noted that the Soap Box Derby hill in Houlton is used for sledding in the winter, and track athletes run up and down the hill for training.

"It's lighted so people can go sledding at night," he said.

SCHOOL HOURS AND CONTACT INFORMATION

Hampden Academy 89 Western Ave., Hampden, ME 04444	LEIGH MAGNAN Principal	Grades 9-12 8:00 a.m.-2:02 p.m.	Main Office 862-3791 Guidance Office 862-4111 Athletic Office 862-3985
Earl C. McGraw Elementary 20 Main Road North, Hampden, ME 04444	KRISTIN BRIGGS Principal	Grades PreK-2 K-2—8:50 a.m.-3 p.m. PreK AM—7:30 a.m.-11 a.m. (Tues-Fri) PreK PM—11:30 a.m.-3 p.m. (Tues-Fri)	Main Office 862-3830
Newburgh Early Childhood Center Newburgh Elementary School 2220 Western Ave., Newburgh, ME 04444	PENQUIS CAP	Pre-K 7:30 a.m.-2 p.m. (Tues-Fri)	Main Office 234-2781
Reeds Brook Middle School 28A Main Road South, Hampden, ME 04444	REGAN NICKELS Principal	Grades 6-8 7:40 a.m.-2:05 p.m.	Main Office 862-3540
Leroy H. Smith School 319 South Main St., Winterport, ME 04496	DAWN MOORE Principal	PreK-4 K-4—7:50 a.m.-2 p.m. PreK—7:30 a.m.-2 p.m. (Mon-Thurs)	Main Office 223-4282
Samuel L. Wagner Middle School 19 Williams Way, Winterport, ME 04496	RICHARD GLENCROSS Principal	Grades 5-8 7:35 a.m.-2:08 p.m.	Main Office 223-4309
George B. Weatherbee School 22 Main Road North, Hampden, ME 04444	CHRISTINE BOONE Principal	Grades 3-5 8:50 a.m.-3 p.m.	Main Office 862-3254

2016-17 Calendar at a glance

August 15	Fall Sports Begin, Hampden Academy
August 25, 29	Teacher Management Day
August 26	Inservice
August 30	First Day of School PreK-9
August 31	All Students Attend PreK-12
September 5	Holiday - No School
October 7	Inservice - No School
October 10	Holiday - No School
November 4	End First Quarter
November 10	Early Dismissal for Parent Teacher Conferences
November 11	Holiday - No School
November 23-25	Holiday Break - No School
December 23-30	Holiday Break - No School
January 2	Holiday - No School
January 16	Holiday - No School
January 26	End Second Quarter
January 27	Inservice - No School
February 20-24	Winter Vacation - No School
March 3	Inservice - No School
April 7	End Third Quarter
April 17-21	Spring Vacation - No School
May 29	Holiday - No School
June 11	High School Graduation
June 13*	Last Day of School for Students

* 3 storm days are included and may alter closing date

RSU 22 ADULT EDUCATION FALL 2016

A wide variety of educational, professional development and personal enrichment courses will again be made available for people to take through our program during the fall academic season. To contact us you can call our office at 862-6422 or email our program director at: mtardie@rsu22.us

High School Completion, HiSET, and Basic Literacy Instruction

For adults looking to earn a high school diploma, a HiSET Certification or to improve basic literacy and ESL skills, we offer year-round opportunities for advancement. If you are interested in earning your Adult Education High School Diploma, you should get a copy of your high school transcript and schedule a meeting with one of our staff. You may be closer to earning a diploma than

you think. In January 2014, the HiSET replaced the GED and became Maine's State High School Equivalency Diploma. Since then, our program has helped many of our residents earn this life-changing credential. Again, just contact our office at any time if you have questions about or interest in the HiSET.

Distance Learning Courses

We continue to offer, through a partnership with Education to Go, nearly 500 interactive personal enrichment online courses to residents of RSU 34 and neighboring communities. All classes are instructor-led, fit into convenient six-week formats and are affordably priced. Some of the more popular course titles include:

Creating WordPress Websites	Accounting Fundamentals	Discover Sign Language
Computer Skills for the Workplace	A to Z Grant Writing Get Grants!	Publish and Sell Your E-Books
Genealogy Basics	Introduction to Windows 10	Introduction to Java Programming
Introduction to PC Troubleshooting	Beginner's Guide to Getting Published	Writing for Children
Start Your Own Small Business		Introduction to Guitar
		Assisting Aging Parents

To view a complete catalog of distance learning courses, visit our page:

www.ed2go.com/rsu22

New CNA Training Class

We are excited to be able to offer again this fall our popular 180 hour CNA Training Course. This course is a great way to get started in the health care field. This fall, we will be running the class on Saturdays from 8:30 am to 4:30 pm and on Tuesdays from 4:00 to 8:00 pm. We are scheduled to start the class on October 15 and the course will run for 14 to 15 weeks. The cost of the course is only

\$750 and we have payment plan options. Students also have the opportunity to be reimbursed for the entire cost of the course! Participants must be 17 years or older. This is a great opportunity for the high school senior who wishes to be able to graduate with a CNA certification in hand. Applications will close October 3. Please call us with questions or to have an application sent to you at: 862-6422.

New Free Online Courses & Training

Through a new partnership with a company called Atomic Learning, we are now able to offer to our residents free access to a variety of educational blogs, videos and online tutorials. If interested, please contact us at 862-6422 or at mtardie@rsu26.us. Some of these topics are:

Web Design	Web Applications	Career Skills
Teaching Strategies	College Success	Communication Skills
Computer Skills	Photography	Finance
Professional Development	Presentations	Operations Systems
Classroom Management	Graphic Design	Word Processing

Personal Enrichment Courses

Once again this fall, we are offering a wide assortment of personal enrichment courses and workshops. Some of the scheduled courses include:

Boston Quincy Market Bus Trip	Jewelry Making	Basic Bike Maintenance
Yoga	How to Buy & Sell on eBay	Common Ground Fair Bus Trip
Zumba	Intermediate Beekeeping	Tai Chi
Rug Hooking	PiYo	Wreath Making
Basic CPR Certification	Maine Driving Dynamics	Basic First Aid
Baking & Cooking	Hunter's Safety	Essential Oils
Pottery / Ceramics	First Aid for Pets	Ballroom Dancing
Painting	Introduction to Digital Photography	Buying & Selling a Home
Publishing Your Own E-Book	Welcome to WordPress	Personal Fitness Training
Introduction to Etsy		

To view our complete Fall 2016 course schedule go to:

www.riversideadulthoodpartnership.com

We've Moved!

After being located in the Reeds Brook Middle School for many years, we have moved our Adult Education office to the second floor of Hampden Academy. Our contact information (phone number

and email address) will remain the same. More of our classes, however, will now be held in the new Hampden Academy, which will allow us greater access to that state-of-the-art facility!

School Opening Information

All Grade Pre-K - 9 district students (Hampden, Newburgh, Winterport, Frankfort) will begin school on Tuesday, August 30, 2016. Grades 10-12 students will begin classes on Wednesday, August 31, 2016.

Visit our website at www.rsu22.us for additional information.

School Nutrition 2016-2017

Our school cafeterias continue to meet federal nutrition standards for school meals, ensuring that meals are healthy and well-balanced and provide students all the nutrition they need to succeed at school. Please encourage your kids to choose school lunch and breakfast!!

School meals offer students milk, fruits and vegetables, proteins and grains, with limits on saturated fat and portion size. The following are some of our nutrition guidelines:

- Age-appropriate calorie limits
- Healthy servings of vegetables and fruits (students must take at least one serving of fruit or vegetable with their lunch meal)
- A wide variety of vegetables, including dark green and red/orange vegetables
- Fat-free or 1% milk (flavored milk must be fat-free)
- Grains which will be at least 51% whole grain will be included in all meals. This includes bread, pastas, rice, snack foods, and breakfast items
- Less sodium
- Legumes (dried peas or beans) at least once weekly
- Students will be offered 1 cup of fruit or vegetable with breakfast.

We're always working to offer RSU 22 students healthy and tasty food choices. We incorporate locally grown and produced foods into our menus whenever possible. We are excited to be serving vegetables grown in our own school garden and greenhouse located at the Reeds Brook Middle School! School meals are a great value and a huge convenience for busy families. We look forward to welcoming your children to our cafeterias this fall!

Lunch prices: Grades K-5 - \$2.30
Grades 6-8- \$2.50
Grades 9-12 -\$ 2.70
Reduced price - .40
Adult - \$4.00
Breakfast - \$ 1.45

Breakfast is FREE for Free AND Reduced students
Cold lunch or snack milk - .55
(there is no free milk program)

Elementary Schools Menu:

Aug 30: Oven Baked Chicken Nuggets, Rice Pilaf, Whole Grain Bread Stick, Sliced Carrots, Fresh Fruit

Aug 31: Breakfast for Lunch: Pancakes and Sausage, 100% Juice Box, Potato Oval Patty, Honeydew Melon

Sept 1: Spaghetti with Meat Sauce, Whole Grain Yeast Roll, Caesar Salad, Pears

Sept 2: Pizza, Raw Veggie Sticks with Dip, Teddy Grahams, Applesauce

Menus for the month will go home with children after school starts and will always be posted on each school's website. On the first day of school, August 30, Grade 9 at Hampden Academy will be treated to an Orientation Lunch sponsored by the Student Council. It will be Pizza, Salad Bar, Chips, Fresh Fruit, and an Ice Cream Sandwich.

A La Carte menus and price lists for Middle Schools and High School are posted in the cafeterias, home rooms, and on-line. Copies are available to all students at the schools. All A La Carte items for sale must meet USDA "Smart Snack" nutritional regulations which include calories, fat, and sugar content.

Children who received free or reduced priced meals last school year will continue to do so this year until new applications are processed. Please return your completed Application for Free or Reduced Priced Meals within the first week of school. They are available online at the schools' websites. Children who receive Free or Reduced priced meals can get a FREE breakfast at all schools.

**** PLEASE NOTE:** Our school district has the Nutri-Kids electronic Point of Service system. Your children will begin the year with the balance they had in their accounts at the end of last school year. Money can be put in accounts electronically at myschoolbucks.com or brought to school. All children K-12 have a 4or 5 digit ID number that you need to deposit money on-line. You may put as much money in accounts as you like and you can find out electronically or through your child's school what the balance is at any time. This is a DEBIT system. Children need to have money in their accounts in order to purchase meals. With any questions about our School Nutrition Program, please call Christine Greenier at 862-3543, or e-mail cgreenier@rsu22.us.

IMPORTANT INFORMATION FOR PARENTS OF HEAD START AND PRE-K STUDENTS IN HAMPDEN - NEWBURGH - WINTERPORT - FRANKFORT

Head Start and Pre-K students will not be let off the bus without an adult present waiting at the bus stop. There will be no exceptions.

Volunteers are welcome!

Parent organizations and volunteers are a very important component of the educational school system. From stuffing envelopes to assisting with field trip supervision to organizing the major PTO/PTF fundraisers, volunteers are making a difference in your local schools and communities. If you are interested in becoming one of these volunteers, please contact your local school for more information.

RSU 22 - 2016-2017

Hampden

6-12 students, AM & PM buses

Hampden 6-12 students have the same bus number in the morning as they do in the afternoon. Please have students outside ready waiting for the bus 5 minutes before the bus arrives.

Run #22

Starts at 6:40 from the corner of Meadow Road and Route 69 headed towards Kennebec Road, including end of Piper Woods Road to the Hampden/Winterport town line on Route 69, end of Rae Way, end of Woods Road, left on Kennebec Road to Newburgh town line, including end of Merchant Road from Box 1420 Kennebec Road to Box 202, turn right on Emerald Drive, right on Wessnette Drive, right on Monroe Road to town line, end of Norway Drive, end of Liberty Lane, drop students at RBMS, drop students at HA.

Run #23 AM ONLY

Starts at 6:45 at the corner of Route 1A and Coldbrook Road to Hermon town line, including Old Coldbrook Road, left on Coldbrook Road from Route 1A to Route 202, including a left on Laskey Lane, then to Main Trail, right on Emerson Drive, left on Ruth Avenue, end of Jay Lane, end of Cool Brook Lane, left on Lindsey Way, right on Papermill Road, left on Emerson Mill Road, end of Ledgewood Drive, right on Manning Mill Road, drop students at RBMS, drop students at HA.

Run #23 PM ONLY

Starts at Route 1A to Daisey Lane, including ends of Elm Street East and West, end of Dudley Street, left on Daisey Lane, ends of Horseshoe Lane, George Street, William Street, left on Charles Street, left on Sunset Avenue, ends of Linden, Stoney Brook and West Brook, right on Route 1A, right on Coldbrook Road from Route 1A to Route 202, including a left on Laskey Lane, then to Main Trail, right on Emerson Drive, left on Ruth Avenue, end of Jay Lane, end of Cool Brook Lane, left on Lindsey Way, right on Papermill Road, left on Emerson Mill Road, end of Ledgewood Drive, right on Manning Mill Road.

Run #26

Starts at 6:50 Back Winterport Road from Baker Road, Kennebec Road box 204 to 1, Main Road South 1A box 1 to Winterport town line, right on Gee Highland Ridge, right on Foster Avenue, Rawley Drive, Clark Circle, end of Perkins Road, end of Kincaid Road, right on Hopkins Road, right on Pleasant Street, left on Cross Street, left on Summer Street, end of Ferry Street, end of Swan Avenue, end of Orient Avenue, drop students at RBMS, drop students at HA.

Run #28 AM ONLY

Starts at 6:45 at 1 Main Road North to Bangor town line, end of Elm Street East and West, end of Dudley Street, Old County Road, end of Mountain View, end of Ball Park Road, end of Patterson Road, end of Wheeldon Heights, left on Perry, left on Coolidge Avenue, end of the following roads Northern Avenue, Hamel Avenue, Triangle Road, Kelly Lane, Gaftway Street, School House Road, Marina Road, Hillside Drive, (Summit Dr.) right on Francis Drive, left on Sophie Lane, end of Riverview, (Marion Drive), end of Carver Road, right on Daisey Lane, end of the following roads; Horseshoe Lane, George Street, William Street, left on Charles Street, left on Sunset Avenue, ends of Linden, Stoney Brook, and West Brook, drop students at RBMS, drop students at HA.

Run #28 PM ONLY

Starts dropping off after Daisey Lane on Route 1A, ends of Sunrise Lane, Chickadee Lane, Riverview, (Marion Drive) left on Francis Drive, left on Sophie Lane, left on Route 1A, left on Old County Road, ends of Mountain View, Ball Park Road, Patterson Road, Wheeldon Heights, left on Perry Road, left on Coolidge Avenue, ends of Northern Avenue, Hamel Avenue, Triangle Road, Kelly Lane, Gaftway Street, School House Road, Marina Road, Hillside Drive, (Summit Dr.) right on Francis Drive, end of Carver Road.

Run #31

Starts at 6:40 Patterson Road, Meadow Road, Gray Stone Creek Road, Ichabod Lane, Rt. 69 from Meadow Road to the intersection blinking light in Newburgh, Rt. 9 Western Avenue to Sawyer Road, right on Sawyer Road, left on Canaan Road, drop students at RBMS, drop students at HA.

Run #34

Starts at 6:40 right on Miller Road, left on Fowler Road, right on Shaw Hill Road, right on Bog Road, right on Pond Road, right on North County to town line, left on Stetson Drive, right on Route 9 to Sawyer Road, Route 9 from Box 1088 to 372 including left on Deer Hill Lane, end of Goodell Farm Road, right on Aarons Way, left on Dunton Circle, right on Silver Drift Lane, right on Johnny's Way, right on Bowen Drive, drop students at RBMS & HA.

Run #36

Starts at 6:45 Mayo Road, Rt. 9 Western Avenue, up to and including Hughes Blvd., Town Farm Road, end of Country Meadows, Griffin Avenue, end of Jewel Drive, Sidney Blvd., end of Wilbur Drive, Evergreen Drive, Surrey Lane, Constitution Avenue, end of Independence Avenue (Liberty Avenue), end of Dewey Street, straight on Cottage Street, left on Canoe Club Road, end of Rowell Road, drop students at RBMS, drop students at HA.

K-5 students, AM & PM buses

Hampden K-5 students have the same bus number in the morning as they do in the afternoon.

Run #22

Starts at 7:50 from Piperwoods Road on Route 69 to Hampden/Winterport town line, including right on Rae Way, end of Hampden Woods Road, left on Kennebec Road, to Hampden/Newburgh town line including end of Merchant Road, Kennebec Road to Meadow Road including right on Emerald Drive and right on Wessnette Drive.

Run #23

Starts at 7:50 at the corner of Route 1A and Coldbrook Road to Hermon town line, including Old Coldbrook Road, left on Coldbrook Road from Route 1A to Route 202, including a left on Laskey Lane, then to Main Trail, right on Emerson Drive, left on Ruth Avenue, right on Jay Lane, end of Cool Brook Lane, left on Lindsey Way, right on Papermill Road, left on Emerson Mill Road, end of Ledgewood Drive, right on Manning Mill Road.

Run #24

Start at 7:50 at 445 Main Road North to Bangor town line, including Mountain View Road, including Hunting Lane, end of Kelly Lane, end of Gaftway Street, end of Marina Road, end of Hillside Drive (Summit Avenue), left on School House Lane, Old County Road, end of Ballfield Road, left on Triangle Road, right on Hamel Avenue, right on Perry Road, left on Coolidge Avenue, left on Patterson Street, left on Wheeldon Heights, Northern Avenue Ext., to the end of Old County Road.

Run #25

Starts at 7:50 on Patterson Road, left on Meadow Road, Gray Stone Creek Road, left on Ichabod Lane, right on Meadow Road, end of Gray Stone Creek Road, right on Route 69 from Meadow Road to the intersection blinking light in Newburgh, including end of Babcock Lane, left on Butternut Lane, left on Acorn Drive, right on Route 9 Western Avenue Box 2021 to Box 1102, right on Sawyer Road, left on Canaan Road.

Run #26

Starts at 7:55 at 1 Main Road South to Winterport town line, including end of Orient Avenue, end of Swan Avenue, right on Pleasant Street, right on Cross Street, left on Summer Street, end of Ferry Road, left on Hopkins Road, right on Gee Way, right on Foster Avenue, right on Rawley Drive, right on Clark Circle, end of Perkins Drive, end of Kincaid Road (Hatch Lane).

Run #29

Starts at 7:50 corner of Main Road, left on Route 9 Box 1 to Hughes Blvd., including end of Dewey Street, left on Constitution Avenue, left on Independence Avenue, left on Liberty Avenue, right on Evergreen, right on Surry Lane, right on Sidney Blvd., end of Wilber Drive, right on Griffin Avenue, end of Jewel Drive, left on Hughes Blvd., right on Town Farm Road, end of Country Meadow Drive.

Run #31

Starts at 7:55 Route 9 from Hughes Blvd. to Sawyer Road Box 372 to Box 1088, including left on Bowen Drive, left on Johnny's Way, right on Dunton Circle, right on Silver Drift Lane, left on Aarons Way, end of Goodell Farm Road, right on Deer Hill Lane, left on Sawyer Road, left on Canaan Road.

Run #34

Starts at 7:50 right on Miller Road, left on Fowler Road, right on Shaw Hill Road, right on Bog Road, right on Pond Road, right on North County to town line, left on Stetson Drive, right on Mayo Road, drop students at McGraw & Weatherbee.

Run #35

Starts at 7:50 at 1 Kennebec Road to Monroe Road, including left on Monroe Road, left on Norway Drive, right on Back Winterport Road to Hampden town line, right on Baker Road, including end of Partridge Road and Libbey Lane.

Run #36

Starts at 7:50 at 1 Main Road North to Box 440, including left on Daisey Lane, left on Horseshoe Lane, left on Charles Street to Edgewood Dr., left on Stoneybrook Road, left on Linden Street, right on Williams Street, right on George Street, left on Sunset Avenue, right on Westbrook Terrace, end of Carver Road, right on Riverview Road, left on Marion Dr., left on Francis Dr., left on Sophie Lane, Main Road North, including end of Dudley Street (Short Wharf Road), end of Elm Street East, end of Elm Street West, left on Canoe Club Road, left on VFW Road, end of Rowell Dr., left on Cottage Street.

Frankfort

FRANKFORT K-12. Please have students outside ready waiting for the bus 5 minutes before the bus arrives.

K-12 students, AM buses

Run #20

Starts at 6:45 on Swanville Road, end of Parker Lane, right on Town Hill Rd 6:53, end of Atwood Drive, right on Marsh Stream Road 7:00, end of Rob Lane, straight on Hamm Road 7:05, end of Moore Lane. Drop students at Wagner 7:23 then Smith School and then continue to HA and drop HA students.

Run #40

Starts at 6:45 on Black Hill Road, end of Lake Road, left on North Searsport Road 6:50, end of White Orchard Road, end of Staples Road, end of Candy Lane, left on Loggin Road (upper part) 6:57 turn and finish Loggin Road (lower part) 7:03. Drop students at Wagner 7:23 then Smith School and then continue to HA and drop HA students.

Run #41

Starts at 6:45 end of Averill Road, straight on Route 1A Bangor Road, right on Mount Waldo Road, left on Old Belfast Road 6:48 (upper part), turn and finish Old Belfast Road (lower part) 6:53, right on West Hill Road 6:58, right on Old Stage Road 7:03, right on Tyler Lane 7:10, right on Treat point Road 7:15. Drop students at Wagner 7:23 then Smith School and then continue to HA and drop HA students.

K-8 Smith and Wagner students, PM buses

Run #20

Starts on Treat Point Road, left on Old Stage Road, right on Tyler Lane, right on West Hill Road, right on Hamm Road, straight on Marsh Stream Road, left on Town Hill Road, left on Swanville Road, end of Parker Lane.

Run #40

Starts at the end of Averill Street, straight on Route 1A, right on Mount Waldo Road, left on Old Belfast Road (upper part), turn and finish Old Belfast Road (lower part), left on Loggin Road, turn at end, right on North Searsport Road, end of Candy Lane, end of Staples Road, right on Black Hill Road, end of Lake Road.

9-12 Hampden Academy students, PM bus

Run #41

Starts left Treat Point Road, right on Old Stage Road, right on Tyler Lane, right on Old Belfast Road, left on Mount Waldo Road, left on Loggin Road, right on Hamm road, turn at Danforth Lane on right, straight on Marsh Stream Road, end of Rob Lane, left on Town Hill Road, straight on Black Hill Road, end of Lake Road, left on North Searsport Road, end of White Orchard Road.

PARENTS OF K-4 STUDENTS:

Please make sure the bus driver sees you when we drop your child off.

If you wish to have your child dropped off without someone physically present at your child's bus stop, you must sign a permission form indicating this. This form is included in your child's packet of forms, which will be sent home from their school during their first week.

This form is only for students in Grades K - 4 - Not for Head Start or Pre-K

Transportation Services

RSU #22 contracts with John T. Cyr & Sons Inc. for transportation services. The transportation of students to and from school is a joint effort between the school district and John T. Cyr & Sons Inc. You may contact John T. Cyr & Sons Inc. at 862-3984 to discuss bussing issues if the need should arise. However, please do not hesitate to contact the Office of the Superintendent of Schools at 862-3255 with any comments or concerns.

REMINDER: IT'S THE LAW

Maine state law prohibits any vehicle (emergency or other) to pass a school bus with its red lights flashing on any road, in any parking lot, or in the schoolyard.

School Bus Schedules

Winterport

K-8 students, AM & PM buses 9-12 (HA) students, AM buses

Note: Winterport K-8 students have the same bus number in the morning as they do in the afternoon. Please have students outside ready waiting for the bus 5 minutes before the bus arrives.

Run #24

Starts at 6:40 K-12 at Baker Road and Route 1A, left on Moyse Road, left on Back Winterport Road, right on Twining Road, left on Twining Lane, right on Coles Corner Road, left on Cove Road, right on Vero's Way, end of Cedarwood Drive, end of Comikev Lane, left on Old Cove Road, right on Cove Road, left on Coles Corner Road, left on Staples Road, left on Coles Corner Road, end of Artic Lane, end of Irish Lane. Drop Wagner students, drop Smith students, continue to HA and drop HA students.

Run #25

Starts at 6:40 K-12 at the end of North Road Dixmont town line, end of Perkins Road, left on Clark Road, including end of Brown Lane, end of Windy Hill Road, then right on Rancourt Road, right on Boston Road, end of Meadow Lane, end of Chickadee Lane, left on Airport Road, left on Oak Street, right on Elm Street. Drop Wagner students, drop Smith students, continue to HA and drop HA students.

Run #27

Starts at 6:40 K-12 on Goshen Road, end closest to Stream Road, all of Goshen Road, including end of Joshua Lane, right on Haley Road, right on Monroe Road, all of Monroe Road (including Blueberry Hill and Sunken Bridge Road) to a left on Route 1A, to a right on Washington Street, including Dean Street and Silver Lane, end of Willow Street, end of Lincoln Street, end of Water Street, left on Route 1A to Mt. View Drive, including end of Ferry Street, end of Kaler Street, end of Sampson Street, end of Church Street, end of Steamboat Avenue, left on Marine Street, right on Holmes Street, including end of Mechanic Street and Parsonage Street. Drop Wagner students, drop Smith students, continue to HA and drop HA students.

Run #29

Starts at 6:45 K-8 ONLY, Route 1A North Winterport line to School Street, including end of Landing Lane, left on Old County Road, left on Riverview Heights, end of Perry Drive, end of Garden Drive, end of Birch Drive, left on Upper Oak Point (K-12), right on Hackett Road, end of Lower Oak Point, end of Penobscot Lane, end of Seabreeze Lane, right on B. Johnson Lane, including end of Taylor Lane, end of Roxy Lane, end of Sky View Lane, end of Memorial Drive, end of Merrill Street, end of School Street, right on Wig Street, left on Park Drive, left on Rob Clark Road. Drop Wagner students, drop Smith students, continue to HA and drop HA students.

Run #32

Starts at 6:45 K-12 corner of Kendall Road and Stream Road, straight on Stream Road, right on Goshen Road, right on Kendall Road, left on Stream Road, including end of Fisher Road, right on Tibbets Bridge Road, right on Stream Road, including end of Pineview Drive (Mylon Lane and Spruce Drive), end of Hasey Lane, end of Elderberry Lane, end of Apple Hill Road, town line Winterport, South Alley Road to Mountain View Drive to Fox Run Road. Drop Wagner students, drop Smith students, continue to HA and drop HA students.

Run #35

Starts at 6:40 K-12 on Meadow Road (Coles Corner Road end), end of Proctor Lane, right on Lebanon Road to Winterport town line, left on Town Farm Road, right on Lebanon Road including end of Harmony Lane, end of Beaver Road, end of Bass Lane, straight on Lebanon Road, end of Cushing Street. Drop Wagner students, drop Smith students, continue to HA and drop HA students.

9-12 (HA) students AM Buses on Route 1A

Bus #27

P/U 7:20 Route 1A Main Road box 497 to box #331 including Holmes Street, Mechanic Street, Marine Street. Pick up locations will be on Main Road.

Bus #24

P/U 7:25-7:30 Route 1A Main Road from box #303 to box #909 just before but not including Memorial Drive, ends of the following roads - Steamboat, Church Street, Sampson Street, Kaler Street, Elm Street, Ferry Street, Water Street, Willow Street, Commercial Street, Silver Lane, Dean Street, Washington Street, Pleasant Street, School Street, Merrill Street. Pick up locations will be on Main Road.

Bus #32

P/U 7:25-7:30 Route 1A Main Road from Memorial Drive to box #1221 including ends of the following roads - Skyview Lane,

Attention parents of Winterport students, Grades 9-12:

After bus unloads at Wager and Smith, Hampden Academy students who live on Route 1A North, including all the side roads except for Upper Oak Point, will take the following buses designated for their area.

Bus #24

P/U Route 1A from Smith School to box #909 on the Main Road including ends of all the following roads - Whig Street, Steamboat, Church Street, Sampson Street, Kaler Street, Ferry Street, Cushing Street, Commercial Street, Lebanon Road, Dean Street, Washington Street, School Street, Merrill Street. Pick up locations will be on Main Street.

Bus #32

P/U Route 1A Main Road from Memorial Drive to box #1221 including ends of the following roads - Skyview Lane, Seabreeze Lane, B. Johnson Lane, Taylor Lane, Roxy Lane, Penobscot Lane. Pick up locations will be on Main Road.

Bus #25

P/U on Route 1A Main Road from Lower Oak Point to Birch Drive - Hackett Road. Pick up locations will be on Main Road.

Bus #35

P/U on Route 1A Main Road from box 1378 to the Winterport Town Line box #1660 including the following roads - Garden Drive, Cedarwood Drive, Perry Drive, Riverview Heights, Old County Road. Pick up locations will be on Main Road.

Seabreeze Lane, B. Johnson Lane, Taylor Lane, Roxy Lane, Penobscot Lane. Pick up locations will be on Main Road.

Bus #25

P/U 7:25-7:30 on Route 1A Main Road from Lower Oak Point to Birch Drive - Hackett Road. Pick up locations will be on Main Road.

Bus #35

P/U 7:25-7:30 on Route 1A Main Road from box 1378 to the Winterport town line box #1660 including the following roads - Garden Drive, Cedarwood Drive, Perry Drive, Riverheights, Old County Road. Pick up locations will be on Main Road.

PM buses

Run #25HA

Leaves Hampden Academy 2:11 Route 1A North after B. Johnson Lane to Route 1A South Winterport town line, including end of Penobscot Lane, end of Seabreeze Lane, end of Sky View Lane, end of Memorial Drive, end of Cushing Street, end of Elm Street, end of Lebanon Street, end of Wig Street, end of Merrill Street, end of School Street, end of Washington Street, end of Dean Street, end of Commercial Street, end of Ferry Street, end of Kaler Street, end of Sampson Street, end of Church Street, end of Steamboat Street, end of Marine Street, end of Holmes Street, including Silver Lane, Water Street, Lincoln Street, Mechanic Street, Parsonage Street, right on Mt. View, right on Fox Run, right on Stream Road, end of Elderberry Street, end of Hasey Lane, end of Pineview Drive, (Mylon Lane/Spruce Drive), end of Fisher Road, end of Tibbets Bridge, right on Kendall, Goshen Road, Haley Road, Monroe Road, (Winterport side of Route 69), Clark Road, end of Joshua Lane, end of Windy Hill, end of Brown Lane, end of Rabbit Hill, end of North Road, end of Perkins Road.

Run #37

Leaves Hampden Academy 2:11, Route 1A North from Winterport town line to and including B. Johnson Lane, including end of Landing Road, Old County Road, Riverview Heights, end of Perry Road, end of Garden Drive, end of Birch Drive, left on Upper Oak Point, end of Hackett Road, end of Lower Oak Point, Baker Road from Route 1A, including end of Moyes Road, Back Winterport Road from Hampden town line to the end of Coles Corner Road, including Twinning Cove Road, end of Comikev Lane, end of Cedarwood Lane, end of Veros Way, end of Staples Road, end of Schoolhouse Lane, end of Rob Clark Road, Route 69 from Route 1A Winterport to Hampden town line, including Airport Road, Boston Road, Meadow Road, Town Farm Road, including end of Alderwood Drive, end of Beaver Road, end of Harmony Lane, end of Bass Lane, end of Rancourt Road, end of Meadow Lane, end of Chickadee Lane, end of Proctor Lane, Monroe Road from the Winterport/Hampden town line, right on Route 69 to the Winterport/Hampden town line.

Newburgh

Newburgh K-12 students have the same bus number in the morning as they do in the afternoon. Please have students outside ready waiting for the bus 5 minutes before the bus arrives.

6-12 students, AM & PM buses

Run #21

Starts at 6:40 on Chapman Road (Western Avenue end), end of Flynn Road, right on Kennebec Road to Christmas Tree Farm, end of Dahlia Farm Road, end of Grant Road, right on Littlefield Road to Box 310, right on Severance Road, right on Kennebec Road to town line, end of Babcock Road. Drop students at RBMS continue to HA and drop HA students.

Run #30

Starts at 6:40 on Lindsay Road (Route 9 Western Avenue end), end of Bates Road, left on North Road to box 1223, end of Kenniston Road, straight on North County Road, left on Route 69 to intersection of the blinking light on Route 69 and Route 9. Drop students at RBMS continue to HA and drop HA students.

Run #33

Starts at 6:40 on Mudget Road (Kennebec Road end), end of Frank West Road, end of Croxford Road, left on Route 9, end of Thurlow Road, right on Miles Road, end of Red School House Road, right on Route 9 to Dixmont town line, end of Kennard Road, all of Route 9 to Hampden line. Drop students at RBMS continue to HA and drop HA students.

K-5 students, AM & PM buses

Run #21

Starts at 7:40 on Chapman Road (Western Avenue end), end of Flynn Road, right on Kennebec Road to Christmas Tree Farm, end of Dahlia Farm Road, right on Littlefield Road to Box 310, right on Severance Road, right on Kennebec Road to town line, end of Babcock Road. Drop students at Weatherbee continue to McGraw and drop McGraw students.

Run #30

Starts at 7:40 on Lindsay Road (Route 9 Western Avenue end), end of Bates Road, left on North Road to Box 1223, end of Kenniston Road, straight on North County Road, left on Route 69 to intersection of the blinking light on Route 69 and Route 9. Drop students at Weatherbee continue to McGraw and drop McGraw students.

Run #33

Starts at 7:40 on Mudget Road (Kennebec Road end), end of Frank West Road, end of Croxford Road, left on Route 9, end of Thurlow Road, right on Miles Road, end of Red School House Road, right on Route 9, to Dixmont town line, end of Kennard Road, making a stop at Newburgh School and all of Route 9 to Hampden line. Drop students at Weatherbee continue to McGraw and drop McGraw students.

Newburgh Head Start AM & PM Bus runs

Run #33

AM bus only covers the following Roads - Mudget Road, Miles Road and Route 9 from the town line Dixmont to the old Newburgh School.

Run #21

PM bus only covers the following Roads - Chapman Road, Kennebec Road from the Christmas Tree Farm to the town line Hampden/Newburgh, Littlefield Road, Severance Road, end of Dahlia Farm Road.

Run #30

PM bus only covers the following roads - Lindsey Road, North Road, North County Road, Route 69 from North Road to box 2142.

A FRIENDLY REMINDER

No through traffic will be allowed on the road behind Weatherbee School to McGraw School during the school day. BUSES ONLY

No through traffic allowed on the road in front of Reeds Brook Middle School from 7 a.m. to 8 a.m. and 1:45 p.m. to 3:30 p.m. Parents can use the back parking lot (gym entrance) to drop and pick up their students.

Attention parents of Newburgh students:

Newburgh students who live on Route 69 from Route 9 to the top of the hill to the Hampden town line will take the following buses: Bus 31 HA and RBMS and Bus 25 Weatherbee and McGraw school.



EARL C. MCGRAW SCHOOL
Kristin Briggs, Principal, 862-3830



Students at McGraw participated in another fun Field Day on Wednesday, June 15. In addition to the games, a BBQ lunch was cooked for students, parents, and staff by our Hampden Public Safety members. McGraw would like to say a big thank you to all of our amazing volunteers who helped to make it a successful day!

Principal's Message: Welcome Back, McGraw!

Welcome back, everyone!

I hope you have had a wonderful summer! I enjoyed camping and swimming with my family and even squeezed in some time to read great books, but now I'm ready for my favorite time of the year—Back to School! Thanks to the amazing RSU 22 custodial staff, our McGraw School is ready for you and so are our wonderful staff members!

We welcome Miss Samantha Pelletier to our

kindergarten team, Miss Brooke Boulanger to our second grade team, and Mrs. Andrea Bozzino to our special education team. They are all very excited to meet everyone at our Open House on Thursday, August 25 from 5 to 6 p.m.

If you are a family with a student entering kindergarten, we welcome you to our 4 to 5 p.m. time in the McGraw gymnasium, when we will have bus information presented by Melanie Michaud of

Cyr Bus Company. There will also be a short bus ride to enjoy! I will also be available to answer any general questions you might have.

As always, our amazing McGraw Parent-Teacher Organization will be present to answer questions and supply snacks at the Open House.

Enjoy the next couple weeks and I'll see you all very soon!

—Take care, Mrs. Briggs

New 5K Fun Run and 1-mile Walk offered earlier in October and with new course

For many years, the RSU 22 Education Foundation has offered this race to celebrate and at the same time help the community. Proceeds for the 5K Fun Run and 1 mile Walk will support the Education Foundation's Mini-Grants, a program allowing educators and staff members in the RSU 22 school system to draw funds for innovative projects not otherwise covered by the school budget.

Typically held late in October, this year's race will be held earlier in October to allow for the weather to be a little warmer. Final dates will be posted by the end of August throughout the community, on racewire.com and sub5.com, so be on the lookout.

We will again map out an attractive but new course including large portions of the Reeds Brook Trail System behind Reeds Brook Middle School. This beautiful trail system came to life 2 years ago through a partnership between students, teachers and community members and is a multi-purpose network of paths available for all to access for both educational and recreational purposes. This worthy and innovative project, supported by many groups such as the Penobscot Valley Ski Club and a grant from Katahdin Trust Company, will also provide outdoor and hands-on learning environments as well as year round access for training and competition for various athletics teams.

Over the last year, the trail system underwent a number of additional improvements and a connector expansion, and it is time to celebrate again. Run, walk, or simply cheer on! If you would like to support the Reeds Brook Trail System directly, a restricted fund is also available through the Education Foundation. All donations are tax deductible as permissible by law.

Foundation Board seeks to expand for 2016-2017

The RSU 22 Education Foundation is actively seeking new board members and committee volunteers to join a growing non-profit organization that supports the students and teachers in the school district. Serving the towns of Frankfort, Hampden, Newburgh and Winterport, the Education Foundation funds initiatives with grants that help foster innovative educational projects. If you have a desire to connect with others who share an interest in quality education for children please consider joining the team.

Interested citizens or those wishing to nominate candidates for the Foundation Board of Directors should email rsu22educationfoundation@gmail.com.

To learn more about the RSU 22 Education Foundation, visit www.rsu22educationfoundation.org.



RSU #22
Education
Foundation

Community Partners for Inspired Education



Off and running at the start of the Reeds Brook Trail.

Business networking and trade show event planned to bring RSU 22 and community together

Always looking for new ways to strengthen the community while at the same time providing resources for education, the RSU 22 Education Foundation is announcing a local trade show and business networking event, allowing any business in the four communities to showcase their products, goods or services in an effective and inexpensive way.

Proceeds of the event will directly benefit education in our school system through grants and operational support.

This exciting event will be held in November 2016 and more details on date and location will be provided in the next issue and many other channels throughout the community.

In the meantime, if you are a small business



Networking and trade show planned for November.

owner and are interested in showing your products or services, please contact Foundation board member Gabe Baker at gbake207@gmail.com.